



*"Members Helping
for 30 Years"*



Members

"Partnering to make recycling strong through economic and environmentally sound solutions"

Northeast Resource Recovery Association, 2101 Dover Road, Epsom, NH 03234

Telephone: (603) 736-4401 or 1-800-223-0150 Fax: (603) 736-4402

E-mail: info@nrra.net

Web Site: www.nrra.net

FULL OF SCRAP Week of 7/18/11

From the Director's Chair.....



WELCOME KRISTINE STANLEY!!!

NRRA has a new addition. Kristine (Kris) Stanley is our new Clerk/Receptionist and will be providing us with much needed assistance in the day-to-day office work. Kris comes to us with years of working in an office, many of which involved working in a high school. If you press "zero", you are likely to reach Kris. Please join us in giving her a warm welcome to the NRRA family!

Calling all NRRA Member Recyclers!

Having just celebrated 30 years of your efforts to improve Resource Recovery and Recycling at the Anniversary Conference in June, the Board of your organization has set aside Wednesday July 27th to try and chart an equally successful course for the next 30 years (one year at a time of course!).

Please take this opportunity to let us know what services you value from NRRA, what goals you would like to see us set for the future, and what areas you would like to see us improve. This is your chance to make suggestions that will be given much weight in the day long session.

As successful as NRRA has been over the years, which success was certainly notable by the years of dedication of our first ever Hall of Fame Inductees last month, we want to be sure and continue that success and celebration of all your hard work for another 30!

You can email, snail mail, fax, call us, or send carrier pigeons but please to take a minute to let us know what you consider to be the most important for NRRA to stay focused on in the years to come. You are NRRA, and your expertise is invaluable! Many Thanks - Mike Durfor

VT E-Waste Reminder

For information on the VT E-Waste Program, please visit <http://www.nrra.net/vermont-e-waste-information/>

CLASSIFIEDS:

HELP WANTED: The Greater New Bedford Regional Refuse Management District Committee has started the search for a new Executive Director since Virginia Valiela will be retiring at the end of this year.

The job posting, along with other useful information about the district, can be viewed on our website at <http://www.gnbrrmdistrict.org/>. Deadline for applications is August 1, 2011.

FOR SALE: Swenson Granite Stainless Steel 2 yard Hydraulic Sander. 2007 PV358-EST Model # 304 – only used for one year. Can be converted to gas. Comes with extra chains and is in very good condition. \$ 2,250. Please call Bob Southworth, Northfield Highway Superintendent at 603-286-4490.

VERTICAL BALER FOR SALE

International Baler Corp
Model #CEB-603
Serial #0793132 Est worth 5,000 to 6,000
Date of manufacture 7/93
Contact: George Turcotte, Franklin, NH - 603-934-4103

DOCK PLATE FOR SALE – the cracks you see have “been there forever” and dock plate is in very useable condition - Please contact Woody at 774-7090.

Dimensions 48” L x 56” W ; Price \$300 or Best Offer



If you have a wanted item or something to sell or trade, email the information to pdow@nrra.net and we'll include it in our next issue!

MARK YOUR CALENDAR FOR THE FOLLOWING MOM MEETINGS BELOW:

July	No Meeting
August 10	NRRA Office – Special MOM Meeting *Board Retreat Update *NH DES Update
September 14	NRRA Office – also Trustee Meeting
October 12	Vendor Facility Tour/Mom Meeting
November 9	NRRA Office/Annual Meeting
December	No Meeting due to Holidays

From Bonnie's Desk...

Here's an interesting article reprinted from the Concord Monitor

State Halts Recycling Of Fluorescent Bulbs

Money Runs Out Of Program To Allow Recycling At Hardware Stores

POSTED: 2:43 pm EDT June 20, 2011

CONCORD, N.H. -- New Hampshire's program to recycle mercury-laced low-energy light bulbs is going dark because of budget cuts.

Funding runs out this month for a 5-year-old program that allows residents to recycle long fluorescent light bulbs and compact fluorescent light bulbs at participating hardware stores.

Some municipal landfills accept the bulbs for recycling but many, including Manchester's, do not. The only two commercial recycling centers in the state are located on the Seacoast, and consumers would have to drive there and pay a quarter or more, per bulb, to recycle them.

"It's a real problem," said Paul Lockwood, pollution prevention supervisor for the state Department of Environmental Services. "It's against the law to put them in the garbage, so what do consumers do with them?"

Lockwood estimates that New Hampshire consumers generate 2.6 million spent CFLs and fluorescent light bars per year, containing a total of six pounds of mercury. The national Environmental Defense Fund said that one-seventh of a teaspoon of mercury can contaminate a 20-acre lake, making its fish inedible. Mercury can cause brain damage and pose other health risks to humans.

"When a lamp is broken, its mercury vaporizes," he said. "If it's broken in a Dumpster, it's released into the immediate environment. If it gets into a landfill, it gets into the ground water. If it's incinerated, it ends up as an air emission."

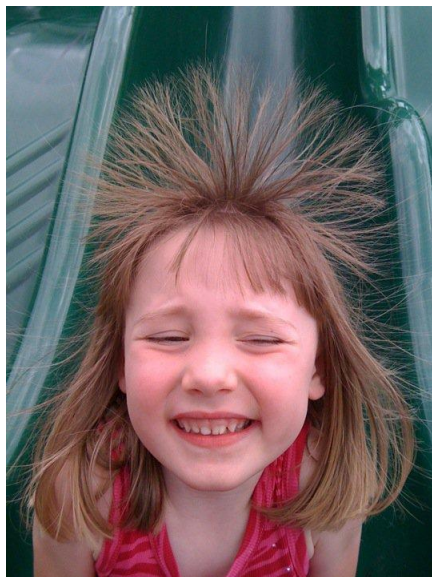
DES officials said municipal leaders need to seize the recycling reins and make citizens aware that careless disposal of the bulbs will erode years of progress.

"If DOT stops fixing potholes, you see the results right away," Lockwood said. "If state police cut patrols, you see results right away. Cut funding for the environment and you don't see the results as quickly. That's our fear. Programs that took 20 years to have a measurable environmental impact will stop, and we'll be where we were 20 years ago."

Read more: <http://www.wmur.com/news/28297630/detail.html#ixzz1QhRgdFvf>

From Adam's Desk...

***On vacation –
need I say more?***



.....a picture's worth a thousand words!

Middle School Students Give Walpole Recycle Center a Facelift

Mr. Perry and his Walpole Middle School Art Class had agreed to paint signs for the front of the Walpole Recycling Center. The signs were to help customers see where the cans, glass and different types of plastic were to be deposited. What nobody counted on was rain.....pouring rain, all day!! Not to be deterred, the large panels were removed, brought inside the center and set up to allow the students to finish their job.



Here is a picture of the students working inside, out of the rain, and a picture tribute to Mr. Perry and his art class. Students volunteering for this worthwhile project (not all of them are pictured here) include: Cassie Sherwin, Abby Ferland, Riley Fletcher, Jeremiah Richardson, Hallie Berry, Brandon Perham, Garrett Andrus, Walker Vose, Hunter Mack, Maddy Beaudry, Stephen Jeminos and Jessica Barnes.



Here is a picture of the finished project! Volunteer efforts, such as this one, are essential to the functioning of our society, particularly in "small-town America." Of particular importance are efforts that grace and beautify our towns, and make us feel good about where we live here in New Hampshire. It seems that this volunteer effort by Mr. Perry and his art students has inspired an effort in some of the surrounding towns to start similar projects. Remember: Here in New Hampshire we have a tradition of self-reliance and volunteerism. Thank Mr. Perry, thank his students, and thank any of the many volunteers who give of their time and talent to the betterment of their home town! And remember: REDUCE – REUSE – RECYCLE!!

From Marilyn's Desk...

EPSOM CENTRAL SCHOOL WINS RECYCLING CONTEST

PRESS RELEASE - WASHINGTON, May 23, 2011 – Epsom Central School was declared a winner in a national recycling contest sponsored by the can industry and was awarded a \$1,000 prize.

Epsom Central School recycled a total of 1100 pounds of cans, the most of any participating school in New Hampshire, and earned more than \$1800 in recycling proceeds, which was used to help fund 8th Grade trip to DC and the purchase of a permanent can cage for the school.

“This was a hard won contest and I couldn’t be prouder of our students and teachers,” said Patrick Connors. “Through this competition, they raised awareness of the importance of recycling and at the same time raised a lot of money that will help support important activities here at Epsom Central School.”

“I congratulate Epsom Central School for their impressive showing and setting such a strong example of the importance – and value – of recycling used cans,” said Robert Budway, president of the Can Manufacturers Institute (CMI), the trade association representing can makers and their suppliers.

CMI sponsored the contest, the *Great American Can Roundup – School Challenge*, which drew the participation of 108 schools from 30 states. Collectively, the schools recycled more than 2.3 million aluminum beverage cans, which generated more than \$34,000 in recycling proceeds. CMI additionally awarded \$1,000 to the top recycling school in each state and \$5,000 to the national winner.

Schools were judged on a per capita basis, comparing the number of cans recycled to the number of students participating. The contest period was November 15, 2010 (America Recycles Day) to April 22, 2011 (Earth Day).

Cans are the most valuable package to recycle, with American consumers earning more than \$1 billion annually in recycling proceeds. It therefore is not surprising that cans are also the most recycled beverage container in the world – and by far – with a U.S. recycling rate of 57.4 percent.

The can’s significant value stems from its unique characteristic of being 100% recyclable back into the original package. Once placed in a recycling bin, a can could be back on a store shelf in as few as 60 days. This closed-loop recycling process has kept millions of tons of material out of landfills. Indeed, 75% of all aluminum ever produced is still in use.

“Metal, essentially, is a permanent resource,” said Budway. “Chances are, the metal in the soda can you’re holding now was previously used by your grandparent’s generation and will likely be used by your grandchildren’s generation. A permanent material meeting the needs of yesterday, today and tomorrow, while minimizing landfill waste and resource depletion – what can be more sustainable than that?”

The infinite recyclability of cans also makes them an energy efficient package. A can made from a recycled can requires 95 percent less energy to produce and therefore has a 95 percent lower carbon footprint than one produced from raw material. Just one recycled can saves enough energy to run a load of laundry, and the energy saved from all cans recycled annually could power the entire city of Washington, DC, for nearly four years.

“Cans, quite simply, are the premier sustainable solution,” said Budway. “By using cans, we are essentially using the same resource over and over, thereby reducing the need for both landfill space and new raw materials. That is the essence of sustainability.”

The Epsom Central School participates in NRRA’s Consolidation Program – Congratulations to all!

Market Trends - Historic Pricing Reports

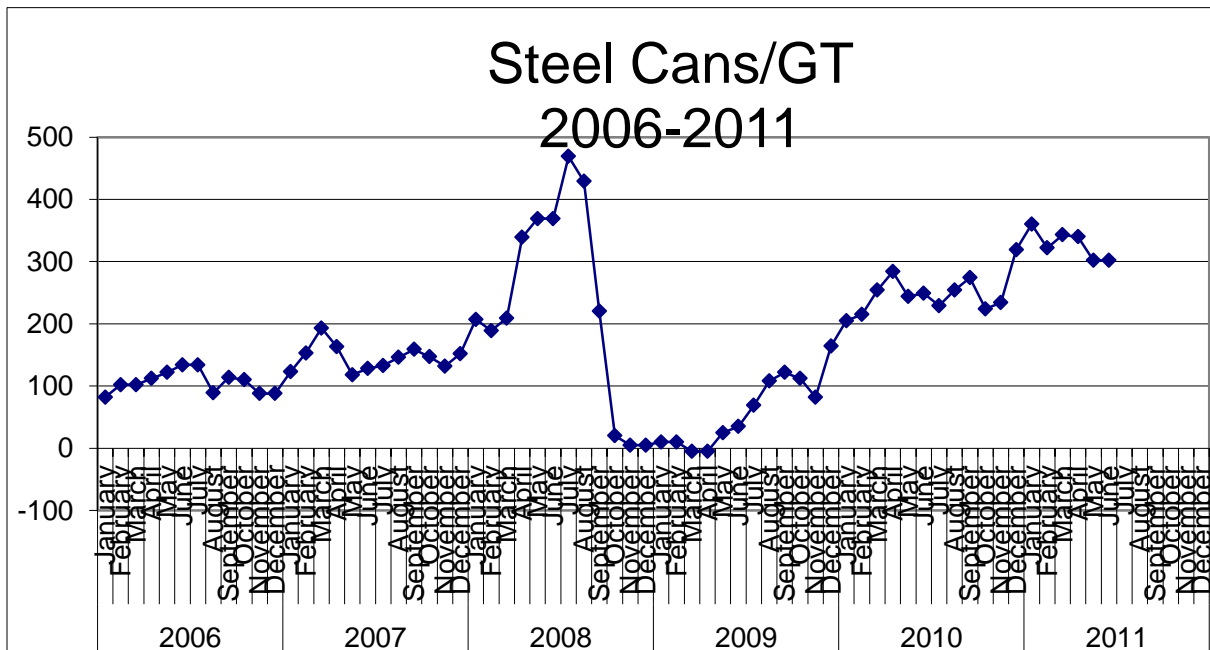
Continuing with our series of market trend information, in this issue we are featuring Steel/Tin Cans. As a reminder, NRRA currently has available Market Trend Reports for Fibers, Steel Cans, Scrap Metal (Bulk and Containerized) and Plastics....simply ask your Member Services representative for a copy.

STEEL/TIN CANS

2006	January	82
	February	102
	March	102
	April	112
	May	122
	June	134
	July	134
	August	89
	September	114
	October	110
	November	88
	December	88
2007	January	123
	February	153
	March	193
	April	163
	May	118
	June	128
	July	133
	August	146
	September	159
	October	147
	November	132
	December	152

2008	January	207
	February	189
	March	209
	April	339
	May	369
	June	369
	July	469
	August	429
	September	220
	October	20
	November	5
	December	5
2009	January	10
	February	10
	March	-5
	April	-5
	May	25
	June	35
	July	69
	August	108
	September	122
	October	112
	November	82
	December	164

2010	January	205
	February	215
	March	254
	April	284
	May	244
	June	249
	July	229
	August	254
	September	274
	October	224
	November	234
	December	319
2011	January	360
	February	322
	March	343
	April	340
	May	302
	June	302
	July	
	August	
	September	
	October	
	November	
	December	



Member to Member

Congratulations to the Town of Lee – and thanks for sharing the good news!

Our town fiscal year ends at the end of June, and our new budget year starts on July 1st for '11/'12. The townspeople of Lee have some news; we generated 1,051 tons of trash which cost us \$74.15/ton to dispose of, for a total of \$77,931. But the good part; we just received our last recycling check and the total for the '10/'11 fiscal year was \$82,451! Yes, again we got more money for recycling income, than we paid to get rid of the trash. This only happened once before in 2008, and that was a state wide first with only one town joining us. Our next goal; calendar year 2011, we need to get the remaining recyclables out of the trash and into the town checkbook. So get the word to those few not recycling! Reduce Reuse Recycle,

Submitted by Roger Rice,
Transfer Station Manager, Town of Lee

From Paula's Desk...

Following is a message from EarthShare New England. NRRA is a founding member of this organization, and we receive donations through it annually. Please help spread the word to increase support.

EarthShare New England: One Environment... One simple way to care for it.

Recycling | Habitat Protection | Clean Air and Clean Water | Education | Land Preservation | Scientific Research | Advocacy | Wildlife

What's your environmental concern? If it is any of the above, or even something else, it's likely that EarthShare New England (ESNE) shares it with you. And ESNE is doing something about it. For twenty years, EarthShare and its affiliates have worked with national and local environmentally-oriented nonprofits, including Northeast Resource Recovery Association, to focus attention and funding on those issues that are so important to all of us. ESNE offers employers and employees an easy and effective way to contribute to its 75 member organizations through workplace payroll contribution campaigns. This is a simple way of raising critical funds for the environment.

If you are currently involved with a workplace campaign that does not include ESNE and its members, ESNE can help you add it to your list of giving opportunities. Don't have any workplace campaign? No problem, we developed an easy-to-use online donation pledging system that gives employees a simple, effective way to support the causes they care about through payroll contributions or a one-time credit card donation (check out <http://earthshare.org/give-at-the-office.html>.) We'll even make sure that all of your favorite charities are included – not just the green ones, but social services, animal welfare and community health services too!

About half of ESNE members are national organizations; the remaining half are national organizations with local offices or thoroughly local, indigenous New England organizations. Some are huge; some are very small. Some work primarily in the international arena; some work on the rivers, trails, forests, and wetlands in your back yard. Some educate the next generation of environmentalists; some work with legislators to find ways to develop sustainable, responsible public policy. Giving at a workplace campaign is a simple, effective way to help them with their work.

Does it sound like a good idea... a sensible way to care for our environment? If yes, please forward this message to Human Resources or give ESNE a call to get started. The first step in providing your colleagues with more giving options is a phone call between Human Resources and ESNE. It's that simple! Remember – EarthShare New England: One environment... One simple way to care for it. For more information, contact:

Jessica Wozniak
Jessica@earthshare.org
508-410-3903

Silent Auction Items – PLACE YOUR BIDS NOW!!!

We have several items that were unclaimed at the NRRA Silent Auction....

Therefore, we are opening them up for bid in our Full of Scrap. If you are interested in any of the following items, please email your bid to info@nrra.net. To view any of these items, click on this link: www.nrra.net/conference/silent-auction-items/.

The bids will close at the end of the business day on Friday, July 22 at 4:00 p.m. High bidder wins the item. If you are the winner, you will be contacted via email. With the exception of gift certificates, you must be able to pick up your item at the NRRA office in Epsom (sorry, we are unable to ship). Thanks for playing and good luck!

Item 1 - 12' rope with hooks – donated by Town of Dunbarton (estimated value \$ 20)

Item 2 - Family portrait - includes portrait session plus one 11x14 framed portrait from Gene Paltrineri Photography in Dover, NH (value \$ 375)

Item 3 - Adjustable wrench – donated by Town of Swanzey (estimated value \$10)

Item 4 - Gift certificate - Vertical Dreams Indoor Climbing Gym in Manchester, NH – Beginner Lessons Package (value \$ 35)

Item 5 – Anniversary Clock – donated by Esther Fishman, Londonderry SW Group, VT (value \$ 50)



SIGNS

New Hampshire Municipalities are all eligible to apply for signs (60 points each fiscal year or until funds run out).

NEW THIS MONTH, we just added signs for rigid plastics and vegetable oil. For a complete list of signs available or to apply for signs, please visit www.nhthebeautiful.org. Just print the forms you need and fax them to Paula at 736-4402. Please NOTE!!! You can only order signs that are on the list. **Words can be removed but nothing can be added.**

RECYCLEMOBILE

To reserve a RecycleMobile for your event, Contact Dow at 1-800-223-0150 or download form at <http://www.nrra.net/membership/recycle-mobile/>

The RecycleMobile was developed to help make recycling special events low-cost, highly visible and efficient. It is a to use, eye-catching recycling unit consisting of a fiberglass box with six collection holes (3 per side) that is attached to a 4' by 6' trailer and houses six - 32 gallon You will need a 2" ball to tow the RecycleMobile.



Paula
at
simple
barrels.

Sponsored by the NRRA and New Hampshire the Beautiful, Inc., and with generous funding from the American Plastics Council, Shop 'n Save and Hannaford Supermarkets, New Hampshire Soft Drink Association, and the National Soft Drink Association.

GRANTS

New Hampshire municipalities are all eligible to apply for grants toward the purchase price of **recycling equipment**. To apply for a grant, go to the NHTB website www.nhthebeautiful.org, print & fill out the form and fax it to Paula at 736-4402. If you do not have access to the internet, please give us a call 800-223-0150, and we can fax or mail a form to you.

The next meeting of the NH the Beautiful Board will be Thursday, August 4, 2011. If you have a grant application that you'd like to submit, please get it to us no later than July 21 in order to be considered at the next meeting.



NEED A KITCHEN PAIL?

We're completely sold out of compost bins and rain barrels, but we still have a few kitchen pails left, so if you haven't purchased yours yet, call Paula at the NRRA office at 1-800-223-0150 before they're gone!

MASSACHUSETTS NEWS

July 15, 2011 SSRC Updates

SSRC releases RFP for Electronic Waste Management

At the Board's request, the SSRC is conducting a Request for Proposals for electronic waste management on behalf of our member towns. The RFP was released this week. The SSRC received requests from twelve companies for proposal packets. Proposals are due on August 4. The Review Committee hopes to review and rank proposals and make recommendations for award by our August 18 meeting.

Be a Recycling Ambassador at the Marshfield Fair

For the seventh straight year, our 2009 Recycling Hero Ann McGovern is once again heading up the recycling effort at the Marshfield Fair. All are invited to join myself, my fiancée (!) Jan, and several of our Board members in volunteering to be a Recycling Ambassador. Whether you show up once or ten times, we can use your help setting up on Thursday 8/18 at 5 pm, cleaning up on Monday, 8/29 at 7 am, and/or consolidating recyclables, encouraging fairgoers and vendors to recycle, collecting food waste for the compost bins, or hanging out at the SSRC exhibit any time in between. Free passes are available for volunteers. Contact Ann at ann.mcgovern@state.ma.us, or 617-292-5834. An update to the Bottle Bill would make recycling at the Fair much easier and more cost effective. See [article](#) below.

Scituate achieves Green Community Status

Earlier this month, Scituate was congratulated on receiving a Green Communities grant after months of work from the Planning Department to have the town adopt new energy standards.

The recognition as a green community, which was initially announced in December, allows the town to share in \$3.6 million in funding for green initiatives while creating stricter energy guidelines for construction and capital purchasing.

As part of the initiative, the town must also reduce their energy consumption by 20 percent in the next five years. In the past, communities such as Hanover, Holyoke, and Hopkinton have received over \$120,000 each from the state to put towards greener updates. More from the boston.com

Hearing on Updated Bottle Bill, Wed., July 20, 10 am

Pressure is mounting for the Mass. Legislature to take up the long awaited Bottle Bill Update. At about 9 am, a press event at Beacon and Bowdoin Streets will precede the Joint Committee on Telecommunications, Utilities and Energy hearing. A large turnout is expected, so the hearing is scheduled for the Gardner Auditorium. Join the SSRC and many organizations and municipalities for either or both events. <http://www.massbottlebill.org/ubb/index.htm>
Use the Hooker Entrance to enter the State House (Beacon Street Entrance right across from Fox25 News Studio). Once you pass through the Security Checkpoint (everyone must) you will take a right and at the end of the hallway are elevators 3 and 4. Press down to call the elevator and once inside press the A button (that will take you to the Gardner Auditorium Lobby).

Organics Task Force and Regulation Changes

MassDEP established the Task Force on Building Organics Capacity to reduce barriers to the development of anaerobic digestion, composting and recycling capacity in Massachusetts.
This Task Force includes representatives from the Mass. Dept. of Agricultural Resources, Dept. of Energy Resources, and the Mass. Clean Energy Center.

Proposed regulations would stipulate that operations that accept and handle source separated materials are not regulated as solid waste facilities. Rather, they would be exempt or require a recycling, composting or conversion operation permit, depending on the type and size.

The proposed regulations would add two new categories of exemptions:

- Permits by rule – includes recycling operations < 250 tons per day (including paper), yard waste composting operations, general composting operations accepting < 30 tons per day of off-site materials, and anaerobic digesters accepting < 60 tons per day of off-site materials.
- Recycling, composting, and conversion permits – replaces current determinations of need and includes any recycling or composting facility above the permit by rule thresholds, as well as conversion facilities for organic materials only.

After the draft regulations are approved by the Executive Office of Energy and Environmental Affairs and Administration and Finance, MassDEP will schedule public hearings and a public comment period.

More information on the Task Force can be found [here](#). For questions, contact Jamie Doucett at: james.doucett@state.ma.us

Small TS permitting, site suitability back in DEP's court

"Dear Members of the Solid Waste Legislation Transition Task Force,
... The final (FY12) Budget has been signed by the Governor and it contains language that returns the responsibility for performing site suitability assessments and for permitting all transfer stations, regardless of size, back to MassDEP. The Solid Waste regulations that are currently in effect reflect this assignment of responsibility and no regulatory changes will be necessary.

I want to thank each and every one of you who ... attended our meetings this past March. I think we at MassDEP learned a great deal about the capacities and challenges faced by Boards of Health and Health ... we've gotten to know each other better, which will help us work together in the future.

- Lines 1350 thru 1355 reinstate the language requiring the Department to issue a site suitability report within 60 days of receipt of an application.
- Lines 1356 through 1359 change the deadline for the Board of Health to hold public hearing on a site assignment application from 60 days from date the application was received to 30 days after receiving the Departments site suitability report (re-establishing the time frame that was in effect before the 2010 Budget changed it). Lines 1363 through 1383 ... have the effect of requiring a permit from the Department for any facility that is established, constructed, expanded, maintained, operated or devoted to any post closure. The new paragraph retains language that was added in 2010 that allows a Department permit to limit or prohibit the disposal of a

particular type of solid waste to protect the public health, promote reuse, waste reduction and recycling, extend the useful life of the facility, or reduce its environmental impact.

...Your work is very important to our overall solid waste program in Massachusetts and I wish you continued success.

Laurel Carlson, Task Force Chair, MassDEP”

The final FY12 Commonwealth Budget may be found [here](#)

Product Stewardship Strategies for Local Governments Conference

When: July 22, 2011, 8:30 a.m. – 4:30 p.m. PST

Webinar Registration: <https://www1.gotomeeting.com/register/294139360>

Seattle Public Utilities, the Northwest Product Stewardship Council, and U.S. EPA Region 10 are hosting a day-long conference to look at how local and state governments can use product stewardship strategies to reduce waste and increase recycling. The conference will provide an overview of product stewardship policies and regulations currently in use in the U.S. and Canada and will provide examples of local and state product stewardship programs, describing how they were developed and funded.

For more information on webinars, please visit www.epa.gov/region10/webinars.

Submitted by Claire Sullivan, Executive Director

[South Shore Recycling Cooperative](#)

781.329.8318; f 781.329.2097; ssrecyclingcoop@verizon.net

Chairman, [Mass Recycles Paper](#)

Save a twig, save a dime, save paper all the time
(thanks to Sierra's Phil Segoe for that little rhyme)

NATIONAL – NEWS

Philips Raising Price of CFLs by 25% Because of Rare Earth Oxide Restrictions

Reprinted from: SmartEnergyPortal.net



Terbium oxide is used in green phosphors in fluorescent lamps.

July 12, 2011 | By Nikki Chandler

In a letter sent to customers, Philips announced it is raising the price of CFLs by an average of 25% effective Aug. 15, 2011. The company was originally only going to raise the price by 10% by Sept. 1, but because of the "result of the impact on rare earth oxides and the extraordinary circumstances in the lighting industry," [Philips](#) has revised the increase. Other suppliers have also announced hefty price increases, including GE and Sylvania.

Linear fluorescent lamps (TL), compact fluorescent integrated (CFLi) and compact fluorescent non-integrated (CFLni) are all included in the increase. "All other products will remain at current levels resulting from the previous price increase effective on May 16, 2010. Please note the August 15th increase is over and above the increase effective on May 16, 2011," the letter read.

The Chinese government and its recent restrictions on [rare earth element](#) exports have caused the problem. Rare earth oxides are a critical component in the making of the phosphors used in linear and compact fluorescent lamps. China controls more than 95% of the global market for these rare earth oxides. The Chinese government has imposed taxes for environmental clean-up and imposed limitations on the amount of oxides available for export. The combination of limited production and imposed taxes to mine and produce these elements has led to unprecedented cost increases that started in January of this year.

Philips said that orders will be accepted and shipped based on current price schedules and availability up until Aug. 12, 2011. These orders shall not exceed 15% above the previous 90 day monthly average purchase history. The Aug. 15, 2011 increase will be factored into stock, end-user pricing programs, and Special Pricing Authorizations (SPA's). Updated price schedules and price agreements will be available in an electronic format on or before Aug. 5, 2011

[Check out the latest SWANA offerings:](#)



The banner features the SWANA's WASTECON logo on the left, with the text 'Featuring the Best in Solid Waste'. On the right, it says 'August 23 - 25, 2011 Nashville MUSIC CITY'. Below the banner is a green navigation bar with links: Home, Register, Event Info, Attendee Center, Speaker Center, Exhibits & Sponsor Center.

[Increase Your Efficiency with WASTECON Training](#)

Are you interested in acquiring CEUs, but not interested in a three-day course? Do you already have most of your CEUs and just need a few more? Join us in Nashville on August 22, 2011, for one of SWANA's Workshops! Gain the CEUs you need to become SWANA Certified with any of these industry-leading training courses led by SWANA Certified Instructors.

[Landfill Gas Systems Operation & Maintenance Two-Day Course](#)
This course provides scalehouse operators, equipment operators, spotters, laborers and other key landfill employees with an overview of landfill operations, how they relate to one another and basic health and safety issues.

[Waste Screening at MSW Facilities One-Day Course](#)
Learn the fundamental and practical elements of waste screening, types of equipment, space requirements and how to handle unacceptable waste. This course also provides examples of methods and procedures to identify waste to be screened at MSW Disposal facilities

[Collection Operations Basics One-Day Course](#)
Gain guidance in collecting solid waste and recyclables from household and commercial establishments on a day-to-day basis. Ideal for all collection operation personnel.

[View All Courses](#) | [Register Now](#)

SWANA-The Solid Waste Association of North America
1100 Wayne Ave Ste 700 | Silver Spring, MD 20910
Phone - 301-585-2898 | Fax - 301-589-7068

Study Says San Francisco Leads North America in Sustainability

Compiled by the Waste Age editorial staff. (reprinted from WasteAge's Waste360)

Jun. 30, 2011 12:36pm

San Francisco is the most environmentally friendly city in North America, according to a study conducted by the [Economist Intelligence Unit](#) and commissioned by [Siemens](#). The study examined 27 major U.S. and Canadian cities' policies and environmental record in nine categories — air quality, buildings, carbon dioxide emissions, energy, environmental governance, land use, transport, water and waste — to produce the Green Cities Index.

San Francisco ranked first in the index, followed by Vancouver, New York, Seattle and Denver. San Francisco also ranked first in the waste category, followed by Seattle, Los Angeles and Toronto.

“The Green Cities Index demonstrates that America’s cities are the driving force behind the nation’s sustainability efforts,” said Eric Speigel, president and CEO of Siemens Corp., in [a press release](#). “Despite the fact that we do not have a federal climate policy in the United States — and no federal carbon standard — 21 of the 27 cities in the index have already set their own carbon reduction targets. Cities are creating comprehensive sustainability plans, utilizing current technology and proving every day that we don’t have to wait to create a more sustainable future.”

“City budgets are as tight as they have ever been, but mayors are leading the charge around making their cities more sustainable because they know they can’t afford to push these decisions off until tomorrow,” added Alison Taylor, chief sustainability officer for the Americas for Siemens Corp., in the press release. “Our goal with the Green City Index is to identify best practices, advance good ideas and provide a baseline for cities to help them set targets for themselves so that they can serve as role models for others with their innovative practices.”